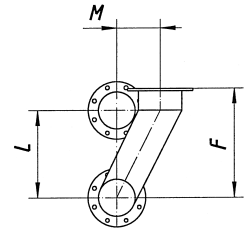
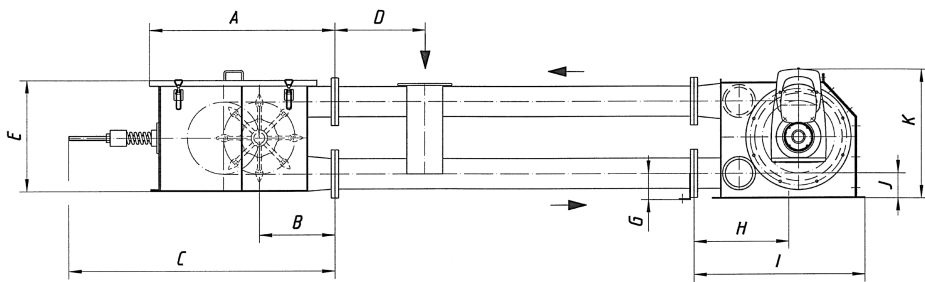


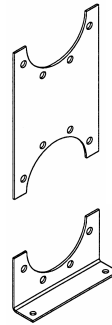
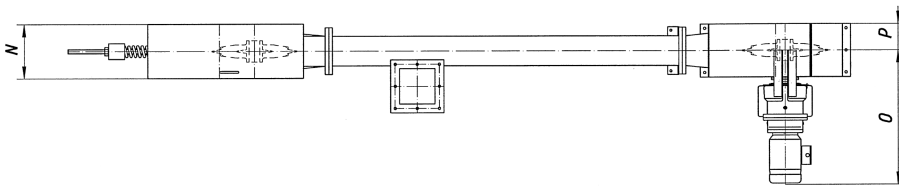
# RKF stehend / TCC upright position

## Datenblatt / Data Sheet



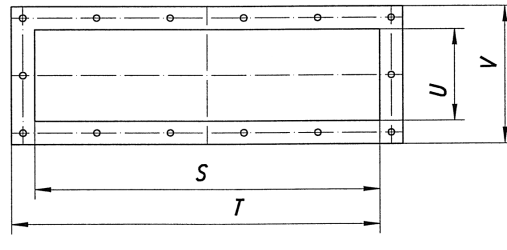
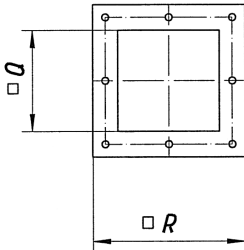
Abstützungen / Supports

Flansch-Flansch  
Upright flange support bracket



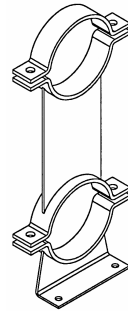
Einlaufflansch  
Inlet flange

Auslaufflansch  
Outlet flange



Kann den Verhältnissen vor Ort  
angepasst werden.  
Can be extended to suit your  
application.

Schelle-Schelle  
Upright tube support bracket



## Maßtabelle / Dimensions

| Typ/<br>Type | A    | B     | C    | D    | E    | F   | G   | H           | I                                   | J                           | K                              | L   | M   | N   | O    |
|--------------|------|-------|------|------|------|-----|-----|-------------|-------------------------------------|-----------------------------|--------------------------------|-----|-----|-----|------|
| <b>115L</b>  | 819  | 362,5 | 1205 | 400  | 518  | 400 | 110 | 400         | 715                                 | 110                         | 550                            | 325 | 150 | 290 | 510  |
| <b>160</b>   | 1025 | 420   | 1520 | 500  | 615  | 500 | 145 | 525         | 950                                 | 138                         | 715                            | 400 | 200 | 306 | 1000 |
| <b>200</b>   | 1100 | 480   | 1600 | 500  | 675  | 525 | 175 | 580         | 1030                                | 165                         | 740                            | 400 | 300 | 356 | 1025 |
| <b>270</b>   | 1350 | 560   | 2010 | 600  | 860  | 650 | 220 | 710         | 1270                                | 200                         | 1010                           | 500 | 300 | 506 | 1150 |
| Typ/<br>Type | P    | Q     | R    | S    | T    | U   | V   | Ø           | Rohrbogenradius<br>Tube bend radius | Kettenrad<br>Drive sprocket | Kette DIN 762<br>Chain DIN 762 |     |     |     |      |
| <b>115L</b>  | 110  | 150   | 230  | 550  | 630  | 140 | 220 | 114,3 x 3,2 | 750 / 2000                          | Ø 330mm                     | Ø 13 x 65                      |     |     |     |      |
| <b>160</b>   | 175  | 200   | 300  | 750  | 850  | 250 | 350 | 168,3 x 4,5 | 1000 / 3000                         | Ø 410mm                     | Ø 16 x 80                      |     |     |     |      |
| <b>200</b>   | 200  | 250   | 350  | 800  | 900  | 300 | 400 | 219,1 x 6,3 | 1000 / 3000                         | Ø 410mm                     | Ø 16 x 80                      |     |     |     |      |
| <b>270</b>   | 235  | 300   | 400  | 1000 | 1120 | 350 | 470 | 273,0 x 8,0 | 1250 / 3000                         | Ø 512mm                     | Ø 20 x 100                     |     |     |     |      |